



# GAT MONTHLY MEMBERSHIP PROGRESS REPORT

Results as of: 7/31/2022

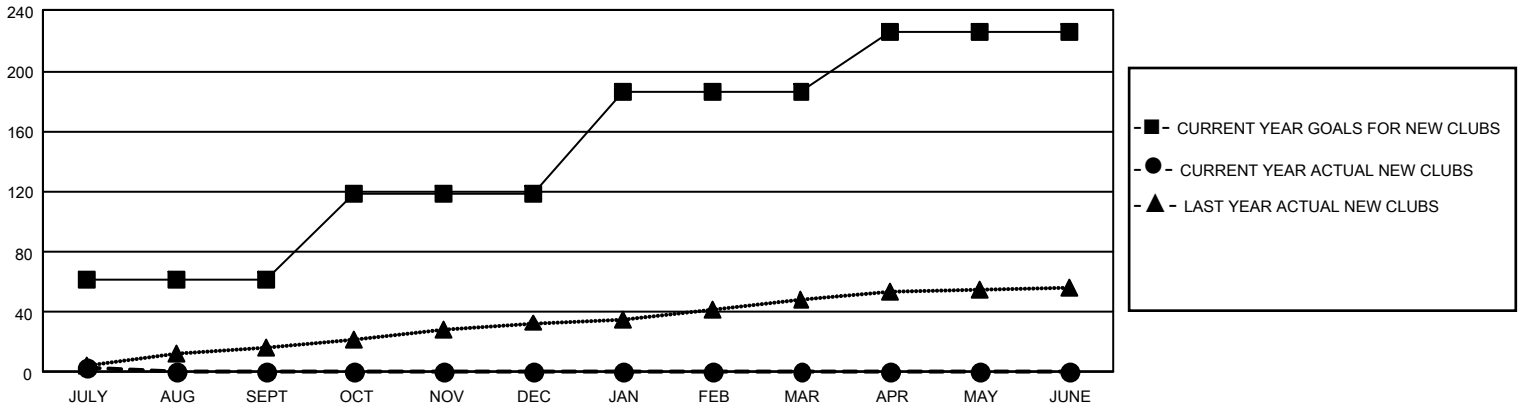
## GAT Constitutional Area 5 - Korea

REPORT DOES NOT INCLUDE CLUBS IN UNDISTRICTED AREAS.

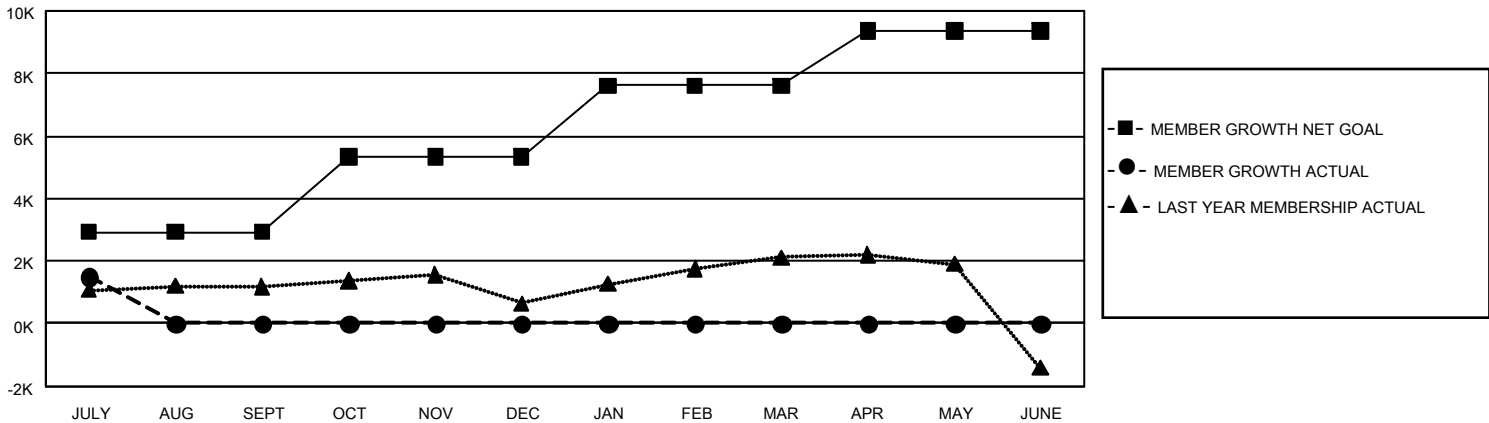
Clubs			
RESULTS FOR 2022-2023			
QUARTER	NEW CLUB GOAL	NEW CLUBS	DROPPED CLUBS
JULY/AUG/SEPT	183	3	6
OCT/NOV/DEC	174	0	0
JAN/FEB/MAR	201	0	0
APR/MAY/JUNE	120	0	0

Members			
RESULTS FOR 2022-2023			
QUARTER	MEMBER GROWTH NET GOAL	MEMBER GROWTH ACTUAL	DROPPED MEMBERS ACTUAL (including transfers)
JULY/AUG/SEPT	2925	2,785	1,171
OCT/NOV/DEC	2400	0	0
JAN/FEB/MAR	2293	0	0
APR/MAY/JUNE	1738	0	0

GOALS AND ACTUAL NEW CLUBS CUMULATIVE



GOALS AND ACTUAL MEMBERS CUMULATIVE



DROPPED CLUBS: 6	
<b>DROPPED MEMBERS</b>	
DECEASED	24
CLUB CANCELLED	0
OTHER	1,147
<b>TOTAL</b>	<b>1,171</b>

697 CLUBS OF 2,040 ADDED 1 OR MORE NEW MEMBERS

[CLICK HERE FOR CUMULATIVE MEMBERSHIP DATA](#)

GENDER DISTRIBUTION	
MALE	54,980 (74.86%)
FEMALE	18,460 (25.14%)
NON BINARY	0 (0.00%)
PREFER NOT TO ANSWER	0 (0.00%)
<b>TOTAL FAMILY UNIT MEMBERS</b>	<b>4,972</b>
<b>FAMILY MEMBERS PAYING HALF DUES</b>	<b>2,874</b>